

Immissionsort: IO Schwalbenstr. 43
 X = 839.01 Y = 1691.40 Z = 7.50
 Variante: BPI-Gebiet ohne HS

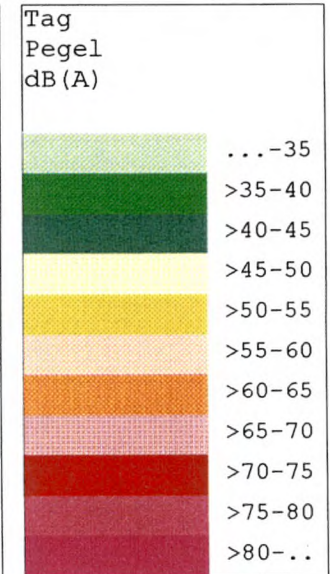
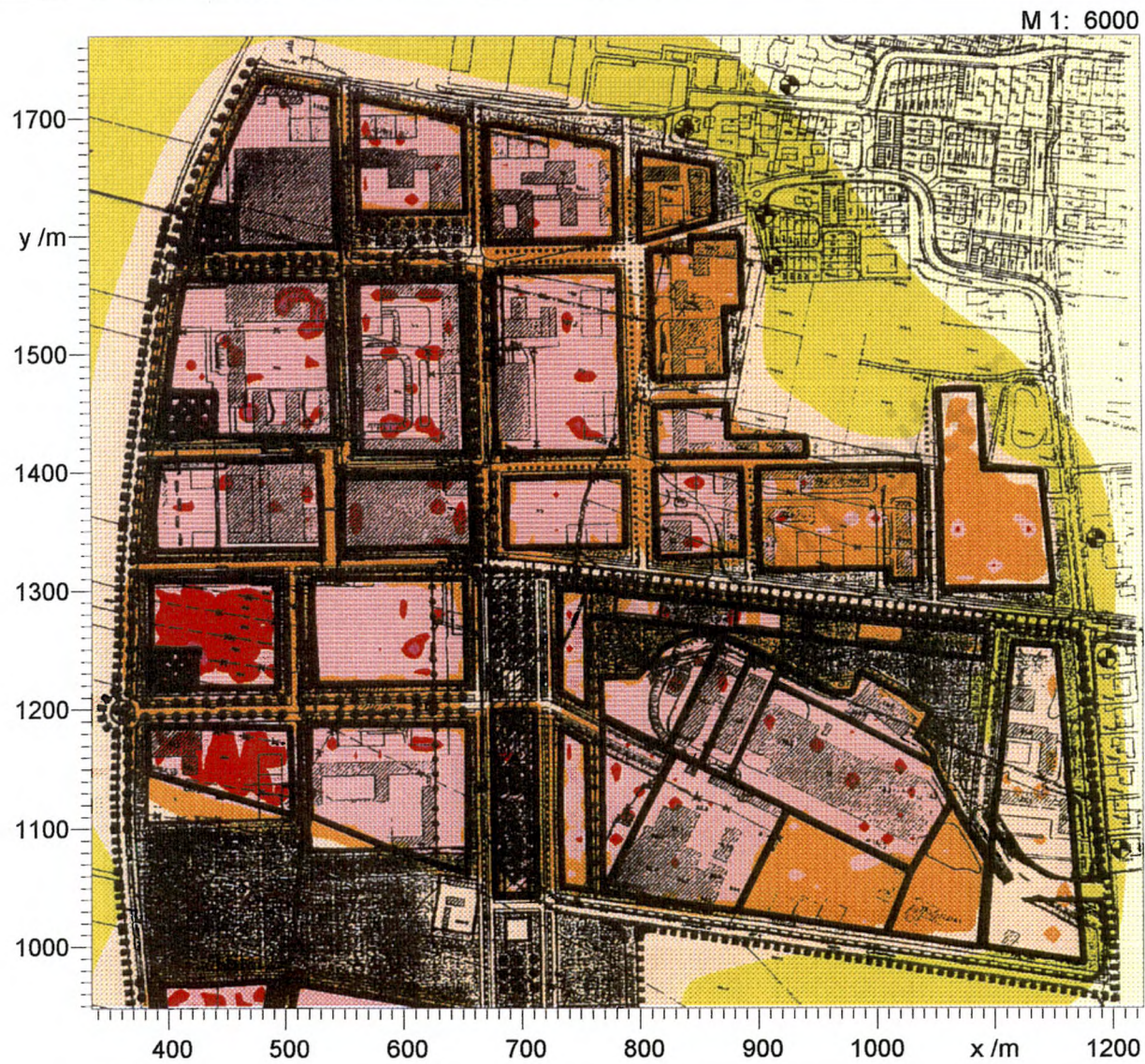
| Element | Bezeichnung | Tag | | Nacht | |
|---------|-----------------|----------------------------|--------------------------|----------------------------|--------------------------|
| | | L _{r,i} /dB(A) | L _r /dB(A) | L _{r,i} /dB(A) | L _r /dB(A) |
| FLQc001 | Quartier 1.1 | 39.4 | 39.4 | 24.4 | 24.4 |
| FLQc002 | Quartier 1.2 | 39.3 | 42.4 | 24.3 | 27.4 |
| FLQc003 | Quartier 2.1 | 47.4 | 48.6 | 32.4 | 33.6 |
| FLQc004 | Quartier 2.2 | 49.9 | 52.3 | 34.9 | 37.3 |
| FLQc005 | Quartier 2.3 | 41.2 | 52.7 | 26.2 | 37.7 |
| FLQc006 | Quartier 2.4 | 34.7 | 52.7 | 19.7 | 37.7 |
| FLQc007 | Quartier 2.5 | 34.1 | 52.8 | 19.1 | 37.8 |
| FLQc008 | Quartier 2.6 | 33.8 | 52.8 | 18.8 | 37.8 |
| FLQc009 | Quartier 2.7 | 30.3 | 52.9 | 15.3 | 37.9 |
| FLQc010 | Quartier 3.1 a | 39.1 | 53.0 | 24.1 | 38.0 |
| FLQc011 | Quartier 3.1 b | 40.8 | 53.3 | 25.8 | 38.3 |
| FLQc012 | Quartier 3.2 a | 35.1 | 53.4 | 20.1 | 38.4 |
| FLQc013 | Quartier 3.2 b | 34.9 | 53.4 | 19.9 | 38.4 |
| FLQc014 | Quartier 4.1 | 43.1 | 53.8 | 28.1 | 38.8 |
| FLQc015 | Quartier 4.2 | 34.2 | 53.9 | 19.2 | 38.9 |
| FLQc016 | Quartier 5.1 | 35.9 | 53.9 | 20.9 | 38.9 |
| FLQc017 | Quartier 5.2 | 33.3 | 54.0 | 18.3 | 39.0 |
| FLQc018 | Quartier 5.3 | 33.1 | 54.0 | 18.1 | 39.0 |
| FLQc019 | Quartier 5.4 | 32.0 | 54.0 | 17.0 | 39.0 |
| FLQc020 | Quartier 5.5 | 27.2 | 54.0 | 12.2 | 39.0 |
| FLQc021 | Quartier 5.6 | 27.4 | 54.0 | 12.4 | 39.0 |
| FLQc022 | Quartier 5.7 | 21.9 | 54.0 | 6.9 | 39.0 |
| FLQc023 | Quartier 6.1 | 32.1 | 54.1 | 17.1 | 39.1 |
| FLQc024 | Quartier 6.2 | 23.4 | 54.1 | 8.4 | 39.1 |
| FLQc025 | Quartier 6.3 | 28.4 | 54.1 | 13.4 | 39.1 |
| FLQc026 | Quartier 6.4 | 25.8 | 54.1 | 10.8 | 39.1 |
| FLQc027 | Quartier 6.5 a | 27.9 | 54.1 | 12.9 | 39.1 |
| FLQc028 | Quartier 6.5 b | 31.5 | 54.1 | 16.5 | 39.1 |
| FLQc029 | Quartier 6.5 c | 30.2 | 54.1 | 15.2 | 39.1 |
| FLQc030 | Quartier 6.5 d | 27.7 | 54.2 | 12.7 | 39.2 |
| FLQc031 | Quartier 6.5 e | 26.9 | 54.2 | 11.9 | 39.2 |
| FLQc032 | Quartier 6.5 f | 33.3 | 54.2 | 18.3 | 39.2 |
| FLQc033 | Quartier 6.5 g | 28.1 | 54.2 | 13.1 | 39.2 |
| FLQc034 | Quartier 6.5 h | 24.5 | 54.2 | 9.5 | 39.2 |
| FLQc035 | Quartier 6.5 i | 22.4 | 54.2 | 7.4 | 39.2 |
| FLQc036 | Quartier 7.1 | 22.1 | 54.2 | | 39.2 |
| FLQc037 | Quartier 8.1 | 29.7 | 54.2 | 14.7 | 39.2 |
| FLQc038 | Quartier 8.2 a | 29.1 | 54.3 | 14.1 | 39.2 |
| FLQc039 | Quartier 8.2 b | 27.9 | 54.3 | 12.9 | 39.3 |
| FLQc040 | Quartier 8.3 | 26.5 | 54.3 | 11.5 | 39.3 |
| FLQc041 | Quartier 9.1 a | 27.5 | 54.3 | 12.5 | 39.3 |
| FLQc042 | Quartier 9.1 b | 29.1 | 54.3 | 14.1 | 39.3 |
| FLQc043 | Quartier 9.1 c | 27.9 | 54.3 | 12.9 | 39.3 |
| FLQc044 | Quartier 9.1 d | 25.7 | 54.3 | 15.7 | 39.3 |
| FLQc045 | Quartier 9.2 | 22.2 | 54.3 | 7.2 | 39.3 |
| FLQc046 | Quartier 10.1 a | 32.6 | 54.3 | 17.6 | 39.3 |
| FLQc047 | Quartier 10.1 b | 28.5 | 54.4 | 13.5 | 39.4 |
| FLQc048 | Quartier 10.2 | 25.4 | 54.4 | 10.4 | 39.4 |
| FLQc049 | Quartier 11.1 | 32.4 | 54.4 | 17.4 | 39.4 |
| | | | 54.4 | | 39.4 |

Immissionsort: IO Schwalbenstr. 98
 X = 928.24 Y = 1728.28 Z = 17.50
 Variante: BPI-Gebiet ohne HS

| Element | Bezeichnung | Tag | | Nacht | |
|---------|-----------------|----------------------------|--------------------------|----------------------------|--------------------------|
| | | L _{r,i} /dB(A) | L _r /dB(A) | L _{r,i} /dB(A) | L _r /dB(A) |
| FLQc001 | Quartier 1.1 | 37.5 | 37.5 | 22.5 | 22.5 |
| FLQc002 | Quartier 1.2 | 36.4 | 40.0 | 21.4 | 25.0 |
| FLQc003 | Quartier 2.1 | 41.6 | 43.9 | 26.6 | 28.9 |
| FLQc004 | Quartier 2.2 | 40.3 | 45.5 | 25.3 | 30.5 |
| FLQc005 | Quartier 2.3 | 38.8 | 46.3 | 23.8 | 31.3 |
| FLQc006 | Quartier 2.4 | 33.8 | 46.5 | 18.8 | 31.5 |
| FLQc007 | Quartier 2.5 | 33.3 | 46.7 | 18.3 | 31.7 |
| FLQc008 | Quartier 2.6 | 33.9 | 47.0 | 18.9 | 32.0 |
| FLQc009 | Quartier 2.7 | 31.1 | 47.1 | 16.1 | 32.1 |
| FLQc010 | Quartier 3.1 a | 37.4 | 47.5 | 22.4 | 32.5 |
| FLQc011 | Quartier 3.1 b | 38.6 | 48.0 | 23.6 | 33.0 |
| FLQc012 | Quartier 3.2 a | 33.6 | 48.2 | 18.6 | 33.2 |
| FLQc013 | Quartier 3.2 b | 33.4 | 48.3 | 18.4 | 33.3 |
| FLQc014 | Quartier 4.1 | 40.4 | 49.0 | 25.4 | 34.0 |
| FLQc015 | Quartier 4.2 | 32.8 | 49.1 | 17.8 | 34.1 |
| FLQc016 | Quartier 5.1 | 34.7 | 49.2 | 19.7 | 34.2 |
| FLQc017 | Quartier 5.2 | 32.1 | 49.3 | 17.1 | 34.3 |
| FLQc018 | Quartier 5.3 | 32.1 | 49.4 | 17.1 | 34.4 |
| FLQc019 | Quartier 5.4 | 31.1 | 49.5 | 16.1 | 34.5 |
| FLQc020 | Quartier 5.5 | 26.4 | 49.5 | 11.4 | 34.5 |
| FLQc021 | Quartier 5.6 | 26.7 | 49.5 | 11.7 | 34.5 |
| FLQc022 | Quartier 5.7 | 21.5 | 49.5 | 6.5 | 34.5 |
| FLQc023 | Quartier 6.1 | 31.4 | 49.6 | 16.4 | 34.6 |
| FLQc024 | Quartier 6.2 | 23.5 | 49.6 | 8.5 | 34.6 |
| FLQc025 | Quartier 6.3 | 27.7 | 49.6 | 12.7 | 34.6 |
| FLQc026 | Quartier 6.4 | 25.1 | 49.6 | 10.1 | 34.6 |
| FLQc027 | Quartier 6.5 a | 27.3 | 49.7 | 12.3 | 34.7 |
| FLQc028 | Quartier 6.5 b | 31.1 | 49.7 | 16.1 | 34.7 |
| FLQc029 | Quartier 6.5 c | 29.5 | 49.8 | 14.5 | 34.8 |
| FLQc030 | Quartier 6.5 d | 27.2 | 49.8 | 12.2 | 34.8 |
| FLQc031 | Quartier 6.5 e | 26.5 | 49.8 | 11.5 | 34.8 |
| FLQc032 | Quartier 6.5 f | 33.2 | 49.9 | 18.2 | 34.9 |
| FLQc033 | Quartier 6.5 g | 28.0 | 49.9 | 13.0 | 34.9 |
| FLQc034 | Quartier 6.5 h | 24.4 | 49.9 | 9.4 | 34.9 |
| FLQc035 | Quartier 6.5 i | 22.5 | 49.9 | 7.5 | 34.9 |
| FLQc036 | Quartier 7.1 | 22.4 | 50.0 | | 34.9 |
| FLQc037 | Quartier 8.1 | 29.0 | 50.0 | 14.0 | 35.0 |
| FLQc038 | Quartier 8.2 a | 28.5 | 50.0 | 13.5 | 35.0 |
| FLQc039 | Quartier 8.2 b | 27.4 | 50.0 | 12.4 | 35.0 |
| FLQc040 | Quartier 8.3 | 26.2 | 50.1 | 11.2 | 35.1 |
| FLQc041 | Quartier 9.1 a | 27.0 | 50.1 | 12.0 | 35.1 |
| FLQc042 | Quartier 9.1 b | 28.6 | 50.1 | 13.6 | 35.1 |
| FLQc043 | Quartier 9.1 c | 27.3 | 50.1 | 12.3 | 35.1 |
| FLQc044 | Quartier 9.1 d | 25.1 | 50.2 | 15.1 | 35.2 |
| FLQc045 | Quartier 9.2 | 21.9 | 50.2 | 6.9 | 35.2 |
| FLQc046 | Quartier 10.1 a | 32.2 | 50.2 | 17.2 | 35.3 |
| FLQc047 | Quartier 10.1 b | 28.1 | 50.3 | 13.1 | 35.3 |
| FLQc048 | Quartier 10.2 | 25.1 | 50.3 | 10.1 | 35.3 |
| FLQc049 | Quartier 11.1 | 32.1 | 50.3 | 17.1 | 35.4 |
| | | | 50.3 | | 35.4 |

Darstellung der wirksamen Geräuschmissionen (Tagzeitraum)

Anlage 4.4 Variante "ohne Vorbelastung"



| Immissionspunkt | | | | | | | BPI-Gebiet gesamt |
|-----------------|----------------------|---------------|----|--------------------------|----------------------------|--|-------------------|
| Element | Bezeichnung | Elementgruppe | ZA | Richtwerte /dB(A) Tag | Richtwerte /dB(A) Nacht | | |
| IPkt001 | IO Liebigweg 2 | Gruppe 0 | 0 | 50.0 | 35.0 | | |
| IPkt002 | IO Robert-Koch-Str. | Gruppe 0 | 0 | 50.0 | 35.0 | | |
| IPkt003 | IO Einsteinstr. 9 | Gruppe 0 | 0 | 55.0 | 40.0 | | |
| IPkt004 | IO Rotkehlchenweg 19 | Gruppe 0 | 0 | 55.0 | 40.0 | | |
| IPkt005 | IO Rotkehlchenweg 1 | Gruppe 0 | 0 | 55.0 | 40.0 | | |
| IPkt006 | IO Schwalbenstr. 43 | Gruppe 0 | 0 | 55.0 | 40.0 | | |
| IPkt007 | IO Schwalbenstr. 98 | Gruppe 0 | 0 | 50.0 | 35.0 | | |

| Flächen-SQ /VDI | | | | | | | | | | BPI-Gebiet gesamt |
|-----------------|----------------|---------------|----|------------------------|-----------|----------|---------------------|---------------|----------------|-------------------|
| Element | Bezeichnung | Elementgruppe | ZA | Fläche /m ² | K0 /dB | Spektrum | Emiss.- Variante | Lw" /dB(A) | Lw /dB(A) | |
| FLQc001 | HS-Landeplatz | Gruppe 6 | 1 | 20640.76 | 3.0 | A-Pegel | Tag Nacht | 73.0 | 116.1 -55.9 | |
| FLQc002 | Quartier 1.1 | Gruppe 1 | 1 | 13151.76 | 3.0 | A-Pegel | Tag Nacht | 62.0 47.0 | 103.2 88.2 | |
| FLQc003 | Quartier 1.2 | Gruppe 1 | 1 | 7992.42 | 3.0 | A-Pegel | Tag Nacht | 60.0 45.0 | 99.0 84.0 | |
| FLQc004 | Quartier 2.1 | Gruppe 1 | 1 | 9722.35 | 3.0 | A-Pegel | Tag Nacht | 55.0 45.0 | 94.9 84.9 | |
| FLQc005 | Quartier 2.2 | Gruppe 1 | 1 | 3895.03 | 3.0 | A-Pegel | Tag Nacht | 55.0 42.0 | 90.9 77.9 | |
| FLQc006 | Quartier 2.3 | Gruppe 1 | 1 | 7858.82 | 3.0 | A-Pegel | Tag Nacht | 55.0 42.0 | 94.0 81.0 | |
| FLQc007 | Quartier 2.4 | Gruppe 1 | 1 | 3691.95 | 3.0 | A-Pegel | Tag Nacht | 60.0 45.0 | 95.7 80.7 | |
| FLQc008 | Quartier 2.5 | Gruppe 1 | 1 | 5332.34 | 3.0 | A-Pegel | Tag Nacht | 60.0 45.0 | 97.3 82.3 | |
| FLQc009 | Quartier 2.6 | Gruppe 1 | 1 | 12133.15 | 3.0 | A-Pegel | Tag Nacht | 57.0 42.0 | 97.8 82.8 | |
| FLQc010 | Quartier 2.7 | Gruppe 1 | 1 | 11328.35 | 3.0 | A-Pegel | Tag Nacht | 50.0 40.0 | 90.5 80.5 | |
| FLQc011 | Quartier 3.1 a | Gruppe 1 | 1 | 18287.11 | 3.0 | A-Pegel | Tag Nacht | 62.0 47.0 | 104.6 89.6 | |
| FLQc012 | Quartier 3.1 b | Gruppe 1 | 1 | 13530.34 | 3.0 | A-Pegel | Tag Nacht | 62.0 47.0 | 103.3 88.3 | |
| FLQc013 | Quartier 3.2 a | Gruppe 1 | 1 | 10788.96 | 3.0 | A-Pegel | Tag Nacht | 62.0 47.0 | 102.3 87.3 | |
| FLQc014 | Quartier 3.2 b | Gruppe 1 | 1 | 6489.92 | 3.0 | A-Pegel | Tag Nacht | 62.0 47.0 | 100.1 85.1 | |
| FLQc015 | Quartier 4.1 | Gruppe 1 | 1 | 16468.71 | 3.0 | A-Pegel | Tag Nacht | 57.0 45.0 | 99.2 87.2 | |
| FLQc016 | Quartier 4.2 | Gruppe 1 | 1 | 5898.59 | 3.0 | A-Pegel | Tag Nacht | 60.0 45.0 | 97.7 82.7 | |
| FLQc017 | Quartier 5.1 | Gruppe 1 | 1 | 9764.97 | 3.0 | A-Pegel | Tag Nacht | 65.0 50.0 | 104.9 89.9 | |
| FLQc018 | Quartier 5.2 | Gruppe 1 | 1 | 11410.53 | 3.0 | A-Pegel | Tag Nacht | 60.0 45.0 | 100.6 85.6 | |
| FLQc019 | Quartier 5.3 | Gruppe 1 | 1 | 6858.56 | 3.0 | A-Pegel | Tag Nacht | 65.0 50.0 | 103.4 88.4 | |
| FLQc020 | Quartier 5.4 | Gruppe 1 | 1 | 13683.53 | 3.0 | A-Pegel | Tag Nacht | 60.0 45.0 | 101.4 86.4 | |
| FLQc021 | Quartier 5.5 | Gruppe 1 | 1 | 3109.22 | 3.0 | A-Pegel | Tag Nacht | 65.0 50.0 | 99.9 84.9 | |
| FLQc022 | Quartier 5.6 | Gruppe 1 | 1 | 5682.62 | 3.0 | A-Pegel | Tag Nacht | 62.0 47.0 | 99.5 84.5 | |
| FLQc023 | Quartier 5.7 | Gruppe 1 | 1 | 2411.87 | 3.0 | A-Pegel | Tag Nacht | 60.0 45.0 | 93.8 78.8 | |
| FLQc024 | Quartier 6.1 | Gruppe 1 | 1 | 6088.51 | 3.0 | A-Pegel | Tag Nacht | 60.0 45.0 | 97.8 82.8 | |

| Flächen-SQ /VDI | | | | | | | | | | BPI-Gebiet gesamt |
|-----------------|-----------------|---------------|----|------------------------|--------|----------|---------------------|---------------|---------------|-------------------|
| Element | Bezeichnung | Elementgruppe | ZA | Fläche /m ² | K0 /dB | Spektrum | Emiss.- Variante | Lw' /dB(A) | Lw /dB(A) | |
| FLQc025 | Quartier 6.2 | Gruppe 1 | 1 | 3208.71 | 3.0 | A-Pegel | Tag Nacht | 55.0 40.0 | 90.1 75.1 | |
| FLQc026 | Quartier 6.3 | Gruppe 1 | 1 | 5575.09 | 3.0 | A-Pegel | Tag Nacht | 60.0 45.0 | 97.5 82.5 | |
| FLQc027 | Quartier 6.4 | Gruppe 1 | 1 | 2980.20 | 3.0 | A-Pegel | Tag Nacht | 60.0 45.0 | 94.7 79.7 | |
| FLQc028 | Quartier 6.5 a | Gruppe 1 | 1 | 4392.95 | 3.0 | A-Pegel | Tag Nacht | 60.0 45.0 | 96.4 81.4 | |
| FLQc029 | Quartier 6.5 b | Gruppe 1 | 1 | 12101.58 | 3.0 | A-Pegel | Tag Nacht | 60.0 45.0 | 100.8 85.8 | |
| FLQc030 | Quartier 6.5 c | Gruppe 1 | 1 | 5063.60 | 3.0 | A-Pegel | Tag Nacht | 60.0 45.0 | 97.0 82.0 | |
| FLQc031 | Quartier 6.5 d | Gruppe 1 | 1 | 2980.44 | 3.0 | A-Pegel | Tag Nacht | 60.0 45.0 | 94.7 79.7 | |
| FLQc032 | Quartier 6.5 e | Gruppe 1 | 1 | 2649.09 | 3.0 | A-Pegel | Tag Nacht | 60.0 45.0 | 94.2 79.2 | |
| FLQc033 | Quartier 6.5 f | Gruppe 1 | 1 | 15403.87 | 3.0 | A-Pegel | Tag Nacht | 55.0 45.0 | 96.9 86.9 | |
| FLQc034 | Quartier 6.5 g | Gruppe 1 | 1 | 3763.65 | 3.0 | A-Pegel | Tag Nacht | 55.0 45.0 | 90.8 80.8 | |
| FLQc035 | Quartier 6.5 h | Gruppe 1 | 1 | 9000.36 | 3.0 | A-Pegel | Tag Nacht | 55.0 40.0 | 94.5 79.5 | |
| FLQc036 | Quartier 6.5 i | Gruppe 1 | 1 | 6198.91 | 3.0 | A-Pegel | Tag Nacht | 50.0 40.0 | 87.9 77.9 | |
| FLQc037 | Quartier 7.1 | Gruppe 1 | 1 | 16181.99 | 3.0 | A-Pegel | Tag Nacht | 45.0 | 87.1 -56.9 | |
| FLQc038 | Quartier 8.1 | Gruppe 1 | 1 | 7203.74 | 3.0 | A-Pegel | Tag Nacht | 65.0 50.0 | 103.6 88.6 | |
| FLQc039 | Quartier 8.2 a | Gruppe 1 | 1 | 11408.22 | 3.0 | A-Pegel | Tag Nacht | 62.0 47.0 | 102.6 87.6 | |
| FLQc040 | Quartier 8.2 b | Gruppe 1 | 1 | 8607.03 | 3.0 | A-Pegel | Tag Nacht | 62.0 47.0 | 101.3 86.3 | |
| FLQc041 | Quartier 8.3 | Gruppe 1 | 1 | 6252.46 | 3.0 | A-Pegel | Tag Nacht | 62.0 47.0 | 100.0 85.0 | |
| FLQc042 | Quartier 9.1 a | Gruppe 1 | 1 | 12009.35 | 3.0 | A-Pegel | Tag Nacht | 62.0 47.0 | 102.8 87.8 | |
| FLQc043 | Quartier 9.1 b | Gruppe 1 | 1 | 15146.64 | 3.0 | A-Pegel | Tag Nacht | 62.0 47.0 | 103.8 88.8 | |
| FLQc044 | Quartier 9.1 c | Gruppe 1 | 1 | 6253.59 | 3.0 | A-Pegel | Tag Nacht | 65.0 50.0 | 103.0 88.0 | |
| FLQc045 | Quartier 9.1 d | Gruppe 1 | 1 | 4491.17 | 3.0 | A-Pegel | Tag Nacht | 65.0 55.0 | 101.5 91.5 | |
| FLQc046 | Quartier 9.2 | Gruppe 1 | 1 | 5014.29 | 3.0 | A-Pegel | Tag Nacht | 60.0 45.0 | 97.0 82.0 | |
| FLQc047 | Quartier 10.1 a | Gruppe 1 | 1 | 29231.87 | 3.0 | A-Pegel | Tag Nacht | 65.0 50.0 | 109.7 94.7 | |
| FLQc048 | Quartier 10.1 b | Gruppe 1 | 1 | 21084.72 | 3.0 | A-Pegel | Tag Nacht | 62.0 47.0 | 105.2 90.2 | |
| FLQc049 | Quartier 10.2 | Gruppe 1 | 1 | 9775.00 | 3.0 | A-Pegel | Tag Nacht | 62.0 47.0 | 101.9 86.9 | |
| FLQc050 | Quartier 11.1 | Gruppe 1 | 1 | 38520.49 | 3.0 | A-Pegel | Tag Nacht | 65.0 50.0 | 110.9 95.9 | |

Immissionsort: IO Liebigweg 2
 X = 1205.75 Y = 1082.51 Z = 5.00
 Variante: BPI-Gebiet gesamt

| Element | Bezeichnung | Tag | | Nacht | |
|---------|-----------------|----------------------------|--------------------------|----------------------------|--------------------------|
| | | L _{r,i} /dB(A) | L _r /dB(A) | L _{r,i} /dB(A) | L _r /dB(A) |
| FLQc001 | HS-Landeplatz | 45.2 | 45.2 | | |
| FLQc002 | Quartier 1.1 | 29.5 | 45.3 | 14.5 | 14.5 |
| FLQc003 | Quartier 1.2 | 26.3 | 45.4 | 11.3 | 16.2 |
| FLQc004 | Quartier 2.1 | 23.5 | 45.4 | 13.5 | 18.1 |
| FLQc005 | Quartier 2.2 | 20.5 | 45.4 | 7.5 | 18.4 |
| FLQc006 | Quartier 2.3 | 25.0 | 45.5 | 12.0 | 19.3 |
| FLQc007 | Quartier 2.4 | 28.4 | 45.6 | 13.4 | 20.3 |
| FLQc008 | Quartier 2.5 | 30.7 | 45.7 | 15.7 | 21.6 |
| FLQc009 | Quartier 2.6 | 33.5 | 46.0 | 18.5 | 23.3 |
| FLQc010 | Quartier 2.7 | 28.1 | 46.0 | 18.1 | 24.5 |
| FLQc011 | Quartier 3.1 a | 31.8 | 46.2 | 16.8 | 25.2 |
| FLQc012 | Quartier 3.1 b | 32.1 | 46.4 | 17.1 | 25.8 |
| FLQc013 | Quartier 3.2 a | 30.1 | 46.5 | 15.1 | 26.1 |
| FLQc014 | Quartier 3.2 b | 29.7 | 46.5 | 14.7 | 26.4 |
| FLQc015 | Quartier 4.1 | 29.4 | 46.6 | 17.4 | 27.0 |
| FLQc016 | Quartier 4.2 | 29.3 | 46.7 | 14.3 | 27.2 |
| FLQc017 | Quartier 5.1 | 32.8 | 46.9 | 17.8 | 27.7 |
| FLQc018 | Quartier 5.2 | 30.6 | 47.0 | 15.6 | 27.9 |
| FLQc019 | Quartier 5.3 | 31.6 | 47.1 | 16.6 | 28.2 |
| FLQc020 | Quartier 5.4 | 31.8 | 47.2 | 16.8 | 28.5 |
| FLQc021 | Quartier 5.5 | 28.0 | 47.3 | 13.0 | 28.7 |
| FLQc022 | Quartier 5.6 | 29.6 | 47.4 | 14.6 | 28.8 |
| FLQc023 | Quartier 5.7 | 27.0 | 47.4 | 12.0 | 28.9 |
| FLQc024 | Quartier 6.1 | 31.8 | 47.5 | 16.8 | 29.2 |
| FLQc025 | Quartier 6.2 | 29.3 | 47.6 | 14.3 | 29.3 |
| FLQc026 | Quartier 6.3 | 29.7 | 47.6 | 14.7 | 29.5 |
| FLQc027 | Quartier 6.4 | 28.0 | 47.7 | 13.0 | 29.6 |
| FLQc028 | Quartier 6.5 a | 30.7 | 47.8 | 15.7 | 29.7 |
| FLQc029 | Quartier 6.5 b | 36.7 | 48.1 | 21.7 | 30.4 |
| FLQc030 | Quartier 6.5 c | 31.5 | 48.2 | 16.5 | 30.5 |
| FLQc031 | Quartier 6.5 d | 30.3 | 48.3 | 15.3 | 30.7 |
| FLQc032 | Quartier 6.5 e | 30.6 | 48.3 | 15.6 | 30.8 |
| FLQc033 | Quartier 6.5 f | 37.1 | 48.7 | 27.1 | 32.3 |
| FLQc034 | Quartier 6.5 g | 30.6 | 48.7 | 20.6 | 32.6 |
| FLQc035 | Quartier 6.5 h | 34.0 | 48.9 | 19.0 | 32.8 |
| FLQc036 | Quartier 6.5 i | 32.3 | 49.0 | 22.3 | 33.2 |
| FLQc037 | Quartier 7.1 | 37.7 | 49.3 | | 33.2 |
| FLQc038 | Quartier 8.1 | 31.2 | 49.3 | 16.2 | 33.3 |
| FLQc039 | Quartier 8.2 a | 31.7 | 49.4 | 16.7 | 33.4 |
| FLQc040 | Quartier 8.2 b | 31.9 | 49.5 | 16.9 | 33.5 |
| FLQc041 | Quartier 8.3 | 31.9 | 49.6 | 16.9 | 33.6 |
| FLQc042 | Quartier 9.1 a | 31.3 | 49.6 | 16.3 | 33.6 |
| FLQc043 | Quartier 9.1 b | 32.7 | 49.7 | 17.7 | 33.7 |
| FLQc044 | Quartier 9.1 c | 30.0 | 49.8 | 15.0 | 33.8 |
| FLQc045 | Quartier 9.1 d | 28.1 | 49.8 | 18.1 | 33.9 |
| FLQc046 | Quartier 9.2 | 27.6 | 49.8 | 12.6 | 34.0 |
| FLQc047 | Quartier 10.1 a | 35.7 | 50.0 | 20.7 | 34.2 |
| FLQc048 | Quartier 10.1 b | 32.9 | 50.1 | 17.9 | 34.3 |
| FLQc049 | Quartier 10.2 | 30.6 | 50.1 | 15.6 | 34.3 |
| FLQc050 | Quartier 11.1 | 36.4 | 50.3 | 21.4 | 34.5 |
| | | | 50.3 | | 34.5 |

Immissionsort: IO Robert-Koch-Str.
 X = 1194.25 Y = 1243.05 Z = 5.00
 Variante: BPI-Gebiet gesamt

| Element | Bezeichnung | Tag | | Nacht | |
|---------|-----------------|-----------------|---------------|-----------------|---------------|
| | | L r,i /dB(A) | L r /dB(A) | L r,i /dB(A) | L r /dB(A) |
| FLQc001 | HS-Landeplatz | 44.9 | 44.9 | | |
| FLQc002 | Quartier 1.1 | 30.8 | 45.1 | 15.8 | 15.8 |
| FLQc003 | Quartier 1.2 | 27.8 | 45.1 | 12.8 | 17.5 |
| FLQc004 | Quartier 2.1 | 25.3 | 45.2 | 15.3 | 19.6 |
| FLQc005 | Quartier 2.2 | 22.7 | 45.2 | 9.7 | 20.0 |
| FLQc006 | Quartier 2.3 | 27.4 | 45.3 | 14.4 | 21.1 |
| FLQc007 | Quartier 2.4 | 31.0 | 45.4 | 16.0 | 22.2 |
| FLQc008 | Quartier 2.5 | 32.9 | 45.7 | 17.9 | 23.6 |
| FLQc009 | Quartier 2.6 | 37.4 | 46.3 | 22.4 | 26.0 |
| FLQc010 | Quartier 2.7 | 35.3 | 46.6 | 25.3 | 28.7 |
| FLQc011 | Quartier 3.1 a | 32.8 | 46.8 | 17.8 | 29.0 |
| FLQc012 | Quartier 3.1 b | 33.4 | 47.0 | 18.4 | 29.4 |
| FLQc013 | Quartier 3.2 a | 30.8 | 47.1 | 15.8 | 29.6 |
| FLQc014 | Quartier 3.2 b | 30.8 | 47.2 | 15.8 | 29.7 |
| FLQc015 | Quartier 4.1 | 31.2 | 47.3 | 19.2 | 30.1 |
| FLQc016 | Quartier 4.2 | 30.8 | 47.4 | 15.8 | 30.3 |
| FLQc017 | Quartier 5.1 | 33.2 | 47.5 | 18.2 | 30.5 |
| FLQc018 | Quartier 5.2 | 31.2 | 47.6 | 16.2 | 30.7 |
| FLQc019 | Quartier 5.3 | 31.8 | 47.8 | 16.8 | 30.9 |
| FLQc020 | Quartier 5.4 | 31.9 | 47.9 | 16.9 | 31.0 |
| FLQc021 | Quartier 5.5 | 27.6 | 47.9 | 12.6 | 31.1 |
| FLQc022 | Quartier 5.6 | 28.9 | 48.0 | 13.9 | 31.2 |
| FLQc023 | Quartier 5.7 | 25.6 | 48.0 | 10.6 | 31.2 |
| FLQc024 | Quartier 6.1 | 33.4 | 48.1 | 18.4 | 31.4 |
| FLQc025 | Quartier 6.2 | 33.9 | 48.3 | 18.9 | 31.7 |
| FLQc026 | Quartier 6.3 | 29.7 | 48.4 | 14.7 | 31.8 |
| FLQc027 | Quartier 6.4 | 27.9 | 48.4 | 12.9 | 31.8 |
| FLQc028 | Quartier 6.5 a | 30.7 | 48.5 | 15.7 | 31.9 |
| FLQc029 | Quartier 6.5 b | 36.2 | 48.7 | 21.2 | 32.3 |
| FLQc030 | Quartier 6.5 c | 32.3 | 48.8 | 17.3 | 32.4 |
| FLQc031 | Quartier 6.5 d | 31.2 | 48.9 | 16.2 | 32.5 |
| FLQc032 | Quartier 6.5 e | 31.4 | 49.0 | 16.4 | 32.6 |
| FLQc033 | Quartier 6.5 f | 36.5 | 49.2 | 26.5 | 33.6 |
| FLQc034 | Quartier 6.5 g | 32.2 | 49.3 | 22.2 | 33.9 |
| FLQc035 | Quartier 6.5 h | 32.1 | 49.4 | 17.1 | 34.0 |
| FLQc036 | Quartier 6.5 i | 27.9 | 49.4 | 17.9 | 34.1 |
| FLQc037 | Quartier 7.1 | 35.5 | 49.6 | | 34.1 |
| FLQc038 | Quartier 8.1 | 30.6 | 49.6 | 15.6 | 34.1 |
| FLQc039 | Quartier 8.2 a | 30.8 | 49.7 | 15.8 | 34.2 |
| FLQc040 | Quartier 8.2 b | 30.7 | 49.7 | 15.7 | 34.3 |
| FLQc041 | Quartier 8.3 | 30.3 | 49.8 | 15.3 | 34.3 |
| FLQc042 | Quartier 9.1 a | 30.0 | 49.8 | 15.0 | 34.4 |
| FLQc043 | Quartier 9.1 b | 31.5 | 49.9 | 16.5 | 34.4 |
| FLQc044 | Quartier 9.1 c | 29.2 | 49.9 | 14.2 | 34.5 |
| FLQc045 | Quartier 9.1 d | 27.2 | 50.0 | 17.2 | 34.6 |
| FLQc046 | Quartier 9.2 | 25.9 | 50.0 | 10.9 | 34.6 |
| FLQc047 | Quartier 10.1 a | 34.6 | 50.1 | 19.6 | 34.7 |
| FLQc048 | Quartier 10.1 b | 31.4 | 50.2 | 16.4 | 34.8 |
| FLQc049 | Quartier 10.2 | 28.9 | 50.2 | 13.9 | 34.8 |
| FLQc050 | Quartier 11.1 | 35.1 | 50.3 | 20.1 | 35.0 |
| | | | 50.3 | | 35.0 |

Immissionsort: IO Einsteinstr. 9
 X = 1185.45 Y = 1344.06 Z = 15.00
 Variante: BPI-Gebiet gesamt

| Element | Bezeichnung | Tag | | Nacht | |
|---------|-----------------|-----------------|---------------|-----------------|---------------|
| | | L r,i /dB(A) | L r /dB(A) | L r,i /dB(A) | L r /dB(A) |
| FLQc001 | HS-Landeplatz | 44.7 | 44.7 | | |
| FLQc002 | Quartier 1.1 | 31.7 | 44.9 | 16.7 | 16.7 |
| FLQc003 | Quartier 1.2 | 29.0 | 45.0 | 14.0 | 18.6 |
| FLQc004 | Quartier 2.1 | 26.8 | 45.1 | 16.8 | 20.8 |
| FLQc005 | Quartier 2.2 | 24.6 | 45.1 | 11.6 | 21.3 |
| FLQc006 | Quartier 2.3 | 29.4 | 45.2 | 16.4 | 22.5 |
| FLQc007 | Quartier 2.4 | 32.8 | 45.5 | 17.8 | 23.8 |
| FLQc008 | Quartier 2.5 | 34.3 | 45.8 | 19.3 | 25.1 |
| FLQc009 | Quartier 2.6 | 40.0 | 46.8 | 25.0 | 28.1 |
| FLQc010 | Quartier 2.7 | 43.1 | 48.3 | 33.1 | 34.3 |
| FLQc011 | Quartier 3.1 a | 33.6 | 48.5 | 18.6 | 34.4 |
| FLQc012 | Quartier 3.1 b | 34.3 | 48.6 | 19.3 | 34.5 |
| FLQc013 | Quartier 3.2 a | 31.3 | 48.7 | 16.3 | 34.6 |
| FLQc014 | Quartier 3.2 b | 31.4 | 48.8 | 16.4 | 34.6 |
| FLQc015 | Quartier 4.1 | 32.5 | 48.9 | 20.5 | 34.8 |
| FLQc016 | Quartier 4.2 | 31.7 | 49.0 | 16.7 | 34.9 |
| FLQc017 | Quartier 5.1 | 33.5 | 49.1 | 18.5 | 35.0 |
| FLQc018 | Quartier 5.2 | 31.5 | 49.2 | 16.5 | 35.0 |
| FLQc019 | Quartier 5.3 | 31.9 | 49.3 | 16.9 | 35.1 |
| FLQc020 | Quartier 5.4 | 31.9 | 49.3 | 16.9 | 35.2 |
| FLQc021 | Quartier 5.5 | 27.3 | 49.4 | 12.3 | 35.2 |
| FLQc022 | Quartier 5.6 | 28.5 | 49.4 | 13.5 | 35.2 |
| FLQc023 | Quartier 5.7 | 24.9 | 49.4 | 9.9 | 35.2 |
| FLQc024 | Quartier 6.1 | 34.0 | 49.5 | 19.0 | 35.3 |
| FLQc025 | Quartier 6.2 | 33.9 | 49.7 | 18.9 | 35.4 |
| FLQc026 | Quartier 6.3 | 29.5 | 49.7 | 14.5 | 35.5 |
| FLQc027 | Quartier 6.4 | 27.6 | 49.7 | 12.6 | 35.5 |
| FLQc028 | Quartier 6.5 a | 30.4 | 49.8 | 15.4 | 35.5 |
| FLQc029 | Quartier 6.5 b | 35.5 | 49.9 | 20.5 | 35.7 |
| FLQc030 | Quartier 6.5 c | 32.5 | 50.0 | 17.5 | 35.7 |
| FLQc031 | Quartier 6.5 d | 31.2 | 50.1 | 16.2 | 35.8 |
| FLQc032 | Quartier 6.5 e | 31.2 | 50.1 | 16.2 | 35.8 |
| FLQc033 | Quartier 6.5 f | 35.2 | 50.3 | 25.2 | 36.2 |
| FLQc034 | Quartier 6.5 g | 31.3 | 50.3 | 21.3 | 36.3 |
| FLQc035 | Quartier 6.5 h | 30.6 | 50.4 | 15.6 | 36.4 |
| FLQc036 | Quartier 6.5 i | 25.4 | 50.4 | 15.4 | 36.4 |
| FLQc037 | Quartier 7.1 | 29.6 | 50.4 | | 36.4 |
| FLQc038 | Quartier 8.1 | 30.2 | 50.5 | 15.2 | 36.4 |
| FLQc039 | Quartier 8.2 a | 30.3 | 50.5 | 15.3 | 36.5 |
| FLQc040 | Quartier 8.2 b | 30.1 | 50.5 | 15.1 | 36.5 |
| FLQc041 | Quartier 8.3 | 29.4 | 50.6 | 14.4 | 36.5 |
| FLQc042 | Quartier 9.1 a | 29.4 | 50.6 | 14.4 | 36.5 |
| FLQc043 | Quartier 9.1 b | 30.9 | 50.7 | 15.9 | 36.6 |
| FLQc044 | Quartier 9.1 c | 28.8 | 50.7 | 13.8 | 36.6 |
| FLQc045 | Quartier 9.1 d | 26.8 | 50.7 | 16.8 | 36.6 |
| FLQc046 | Quartier 9.2 | 25.0 | 50.7 | 10.0 | 36.7 |
| FLQc047 | Quartier 10.1 a | 34.1 | 50.8 | 19.1 | 36.7 |
| FLQc048 | Quartier 10.1 b | 30.7 | 50.8 | 15.7 | 36.8 |
| FLQc049 | Quartier 10.2 | 28.1 | 50.9 | 13.1 | 36.8 |
| FLQc050 | Quartier 11.1 | 34.4 | 51.0 | 19.4 | 36.9 |
| | | | 51.0 | | 36.9 |

Immissionsort: IO Rotkehlchenweg 19
 X = 913.75 Y = 1575.09 Z = 7.50
 Variante: BPI-Gebiet gesamt

| Element | Bezeichnung | Tag | | Nacht | |
|---------|-----------------|----------------------------|--------------------------|----------------------------|--------------------------|
| | | L _{r,i} /dB(A) | L _r /dB(A) | L _{r,i} /dB(A) | L _r /dB(A) |
| FLQc001 | HS-Landeplatz | 45.4 | 45.4 | | |
| FLQc002 | Quartier 1.1 | 37.4 | 46.0 | 22.4 | 22.4 |
| FLQc003 | Quartier 1.2 | 36.1 | 46.5 | 21.1 | 24.8 |
| FLQc004 | Quartier 2.1 | 36.9 | 46.9 | 26.9 | 29.0 |
| FLQc005 | Quartier 2.2 | 40.2 | 47.7 | 27.2 | 31.2 |
| FLQc006 | Quartier 2.3 | 48.5 | 51.2 | 35.5 | 36.9 |
| FLQc007 | Quartier 2.4 | 40.0 | 51.5 | 25.0 | 37.1 |
| FLQc008 | Quartier 2.5 | 38.2 | 51.7 | 23.2 | 37.3 |
| FLQc009 | Quartier 2.6 | 38.6 | 51.9 | 23.6 | 37.5 |
| FLQc010 | Quartier 2.7 | 29.5 | 51.9 | 19.5 | 37.6 |
| FLQc011 | Quartier 3.1 a | 38.4 | 52.1 | 23.4 | 37.7 |
| FLQc012 | Quartier 3.1 b | 40.4 | 52.4 | 25.4 | 38.0 |
| FLQc013 | Quartier 3.2 a | 35.0 | 52.5 | 20.0 | 38.0 |
| FLQc014 | Quartier 3.2 b | 35.7 | 52.5 | 20.7 | 38.1 |
| FLQc015 | Quartier 4.1 | 41.2 | 52.9 | 29.2 | 38.6 |
| FLQc016 | Quartier 4.2 | 36.4 | 52.9 | 21.4 | 38.7 |
| FLQc017 | Quartier 5.1 | 36.2 | 53.0 | 21.2 | 38.8 |
| FLQc018 | Quartier 5.2 | 34.2 | 53.1 | 19.2 | 38.8 |
| FLQc019 | Quartier 5.3 | 33.7 | 53.1 | 18.7 | 38.9 |
| FLQc020 | Quartier 5.4 | 33.1 | 53.2 | 18.1 | 38.9 |
| FLQc021 | Quartier 5.5 | 27.9 | 53.2 | 12.9 | 38.9 |
| FLQc022 | Quartier 5.6 | 28.4 | 53.2 | 13.4 | 38.9 |
| FLQc023 | Quartier 5.7 | 23.4 | 53.2 | 8.4 | 39.0 |
| FLQc024 | Quartier 6.1 | 34.8 | 53.3 | 19.8 | 39.0 |
| FLQc025 | Quartier 6.2 | 26.8 | 53.3 | 11.8 | 39.0 |
| FLQc026 | Quartier 6.3 | 30.0 | 53.3 | 15.0 | 39.0 |
| FLQc027 | Quartier 6.4 | 27.5 | 53.3 | 12.5 | 39.0 |
| FLQc028 | Quartier 6.5 a | 29.9 | 53.3 | 14.9 | 39.1 |
| FLQc029 | Quartier 6.5 b | 33.6 | 53.4 | 18.6 | 39.1 |
| FLQc030 | Quartier 6.5 c | 32.7 | 53.4 | 17.7 | 39.1 |
| FLQc031 | Quartier 6.5 d | 30.3 | 53.4 | 15.3 | 39.1 |
| FLQc032 | Quartier 6.5 e | 29.6 | 53.5 | 14.6 | 39.2 |
| FLQc033 | Quartier 6.5 f | 30.9 | 53.5 | 20.9 | 39.2 |
| FLQc034 | Quartier 6.5 g | 26.0 | 53.5 | 16.0 | 39.2 |
| FLQc035 | Quartier 6.5 h | 26.7 | 53.5 | 11.7 | 39.3 |
| FLQc036 | Quartier 6.5 i | 19.7 | 53.5 | 9.7 | 39.3 |
| FLQc037 | Quartier 7.1 | 19.6 | 53.5 | | 39.3 |
| FLQc038 | Quartier 8.1 | 30.5 | 53.5 | 15.5 | 39.3 |
| FLQc039 | Quartier 8.2 a | 30.0 | 53.6 | 15.0 | 39.3 |
| FLQc040 | Quartier 8.2 b | 29.1 | 53.6 | 14.1 | 39.3 |
| FLQc041 | Quartier 8.3 | 27.9 | 53.6 | 12.9 | 39.3 |
| FLQc042 | Quartier 9.1 a | 28.4 | 53.6 | 13.4 | 39.3 |
| FLQc043 | Quartier 9.1 b | 30.1 | 53.6 | 15.1 | 39.3 |
| FLQc044 | Quartier 9.1 c | 28.6 | 53.6 | 13.6 | 39.4 |
| FLQc045 | Quartier 9.1 d | 26.4 | 53.6 | 16.4 | 39.4 |
| FLQc046 | Quartier 9.2 | 23.4 | 53.6 | 8.4 | 39.4 |
| FLQc047 | Quartier 10.1 a | 33.4 | 53.7 | 18.4 | 39.4 |
| FLQc048 | Quartier 10.1 b | 29.4 | 53.7 | 14.4 | 39.4 |
| FLQc049 | Quartier 10.2 | 26.4 | 53.7 | 11.4 | 39.4 |
| FLQc050 | Quartier 11.1 | 33.3 | 53.7 | 18.3 | 39.5 |
| | | | 53.7 | | 39.5 |

Immissionsort: IO Rotkehlchenweg 1
 X = 906.99 Y = 1617.57 Z = 7.50
 Variante: BPI-Gebiet gesamt

| Element | Bezeichnung | Tag | | Nacht | |
|---------|-----------------|----------------------------|--------------------------|----------------------------|--------------------------|
| | | L _{r,i} /dB(A) | L _r /dB(A) | L _{r,i} /dB(A) | L _r /dB(A) |
| FLQc001 | HS-Landeplatz | 44.9 | 44.9 | | |
| FLQc002 | Quartier 1.1 | 37.7 | 45.7 | 22.7 | 22.7 |
| FLQc003 | Quartier 1.2 | 36.6 | 46.2 | 21.6 | 25.2 |
| FLQc004 | Quartier 2.1 | 37.9 | 46.8 | 27.9 | 29.7 |
| FLQc005 | Quartier 2.2 | 44.0 | 48.6 | 31.0 | 33.4 |
| FLQc006 | Quartier 2.3 | 46.0 | 50.5 | 33.0 | 36.2 |
| FLQc007 | Quartier 2.4 | 37.7 | 50.7 | 22.7 | 36.4 |
| FLQc008 | Quartier 2.5 | 36.5 | 50.9 | 21.5 | 36.5 |
| FLQc009 | Quartier 2.6 | 36.8 | 51.0 | 21.8 | 36.7 |
| FLQc010 | Quartier 2.7 | 28.2 | 51.1 | 18.2 | 36.7 |
| FLQc011 | Quartier 3.1 a | 38.3 | 51.3 | 23.3 | 36.9 |
| FLQc012 | Quartier 3.1 b | 40.2 | 51.6 | 25.2 | 37.2 |
| FLQc013 | Quartier 3.2 a | 34.8 | 51.7 | 19.8 | 37.3 |
| FLQc014 | Quartier 3.2 b | 35.1 | 51.8 | 20.1 | 37.4 |
| FLQc015 | Quartier 4.1 | 40.5 | 52.1 | 28.5 | 37.9 |
| FLQc016 | Quartier 4.2 | 35.4 | 52.2 | 20.4 | 38.0 |
| FLQc017 | Quartier 5.1 | 35.9 | 52.3 | 20.9 | 38.1 |
| FLQc018 | Quartier 5.2 | 33.7 | 52.4 | 18.7 | 38.1 |
| FLQc019 | Quartier 5.3 | 33.3 | 52.4 | 18.3 | 38.1 |
| FLQc020 | Quartier 5.4 | 32.5 | 52.5 | 17.5 | 38.2 |
| FLQc021 | Quartier 5.5 | 27.5 | 52.5 | 12.5 | 38.2 |
| FLQc022 | Quartier 5.6 | 27.9 | 52.5 | 12.9 | 38.2 |
| FLQc023 | Quartier 5.7 | 22.8 | 52.5 | 7.8 | 38.2 |
| FLQc024 | Quartier 6.1 | 33.7 | 52.5 | 18.7 | 38.3 |
| FLQc025 | Quartier 6.2 | 25.6 | 52.6 | 10.6 | 38.3 |
| FLQc026 | Quartier 6.3 | 29.3 | 52.6 | 14.3 | 38.3 |
| FLQc027 | Quartier 6.4 | 26.8 | 52.6 | 11.8 | 38.3 |
| FLQc028 | Quartier 6.5 a | 29.1 | 52.6 | 14.1 | 38.3 |
| FLQc029 | Quartier 6.5 b | 32.8 | 52.7 | 17.8 | 38.4 |
| FLQc030 | Quartier 6.5 c | 31.6 | 52.7 | 16.6 | 38.4 |
| FLQc031 | Quartier 6.5 d | 29.3 | 52.7 | 14.3 | 38.4 |
| FLQc032 | Quartier 6.5 e | 28.5 | 52.7 | 13.5 | 38.4 |
| FLQc033 | Quartier 6.5 f | 29.9 | 52.7 | 19.9 | 38.5 |
| FLQc034 | Quartier 6.5 g | 24.9 | 52.8 | 14.9 | 38.5 |
| FLQc035 | Quartier 6.5 h | 25.9 | 52.8 | 10.9 | 38.5 |
| FLQc036 | Quartier 6.5 i | 18.9 | 52.8 | 8.9 | 38.5 |
| FLQc037 | Quartier 7.1 | 18.8 | 52.8 | | 38.5 |
| FLQc038 | Quartier 8.1 | 30.1 | 52.8 | 15.1 | 38.5 |
| FLQc039 | Quartier 8.2 a | 29.6 | 52.8 | 14.6 | 38.5 |
| FLQc040 | Quartier 8.2 b | 28.6 | 52.8 | 13.6 | 38.6 |
| FLQc041 | Quartier 8.3 | 27.3 | 52.8 | 12.3 | 38.6 |
| FLQc042 | Quartier 9.1 a | 28.0 | 52.9 | 13.0 | 38.6 |
| FLQc043 | Quartier 9.1 b | 29.7 | 52.9 | 14.7 | 38.6 |
| FLQc044 | Quartier 9.1 c | 28.3 | 52.9 | 13.3 | 38.6 |
| FLQc045 | Quartier 9.1 d | 26.1 | 52.9 | 16.1 | 38.6 |
| FLQc046 | Quartier 9.2 | 22.9 | 52.9 | 7.9 | 38.6 |
| FLQc047 | Quartier 10.1 a | 33.0 | 52.9 | 18.0 | 38.7 |
| FLQc048 | Quartier 10.1 b | 29.1 | 53.0 | 14.1 | 38.7 |
| FLQc049 | Quartier 10.2 | 26.0 | 53.0 | 11.0 | 38.7 |
| FLQc050 | Quartier 11.1 | 32.9 | 53.0 | 17.9 | 38.7 |
| | | | 53.0 | | 38.7 |

Immissionsort: IO Schwalbenstr. 43
 X = 839.01 Y = 1691.40 Z = 7.50
 Variante: BPI-Gebiet gesamt

| Element | Bezeichnung | Tag | | Nacht | |
|---------|-----------------|----------------|--------------|----------------|--------------|
| | | Lr,i /dB(A) | Lr /dB(A) | Lr,i /dB(A) | Lr /dB(A) |
| FLQc001 | HS-Landeplatz | 44.5 | 44.5 | | |
| FLQc002 | Quartier 1.1 | 39.4 | 45.7 | 24.4 | 24.4 |
| FLQc003 | Quartier 1.2 | 39.3 | 46.6 | 24.3 | 27.4 |
| FLQc004 | Quartier 2.1 | 42.4 | 48.0 | 32.4 | 33.6 |
| FLQc005 | Quartier 2.2 | 47.9 | 51.0 | 34.9 | 37.3 |
| FLQc006 | Quartier 2.3 | 39.2 | 51.3 | 26.2 | 37.7 |
| FLQc007 | Quartier 2.4 | 34.7 | 51.4 | 19.7 | 37.7 |
| FLQc008 | Quartier 2.5 | 34.1 | 51.4 | 19.1 | 37.8 |
| FLQc009 | Quartier 2.6 | 33.8 | 51.5 | 18.8 | 37.8 |
| FLQc010 | Quartier 2.7 | 25.3 | 51.5 | 15.3 | 37.9 |
| FLQc011 | Quartier 3.1 a | 39.1 | 51.8 | 24.1 | 38.0 |
| FLQc012 | Quartier 3.1 b | 40.8 | 52.1 | 25.8 | 38.3 |
| FLQc013 | Quartier 3.2 a | 35.1 | 52.2 | 20.1 | 38.4 |
| FLQc014 | Quartier 3.2 b | 34.9 | 52.3 | 19.9 | 38.4 |
| FLQc015 | Quartier 4.1 | 40.1 | 52.5 | 28.1 | 38.8 |
| FLQc016 | Quartier 4.2 | 34.2 | 52.6 | 19.2 | 38.9 |
| FLQc017 | Quartier 5.1 | 35.9 | 52.7 | 20.9 | 38.9 |
| FLQc018 | Quartier 5.2 | 33.3 | 52.7 | 18.3 | 39.0 |
| FLQc019 | Quartier 5.3 | 33.1 | 52.8 | 18.1 | 39.0 |
| FLQc020 | Quartier 5.4 | 32.0 | 52.8 | 17.0 | 39.0 |
| FLQc021 | Quartier 5.5 | 27.2 | 52.8 | 12.2 | 39.0 |
| FLQc022 | Quartier 5.6 | 27.4 | 52.8 | 12.4 | 39.0 |
| FLQc023 | Quartier 5.7 | 21.9 | 52.8 | 6.9 | 39.0 |
| FLQc024 | Quartier 6.1 | 32.1 | 52.9 | 17.1 | 39.1 |
| FLQc025 | Quartier 6.2 | 23.4 | 52.9 | 8.4 | 39.1 |
| FLQc026 | Quartier 6.3 | 28.4 | 52.9 | 13.4 | 39.1 |
| FLQc027 | Quartier 6.4 | 25.8 | 52.9 | 10.8 | 39.1 |
| FLQc028 | Quartier 6.5 a | 27.9 | 52.9 | 12.9 | 39.1 |
| FLQc029 | Quartier 6.5 b | 31.5 | 52.9 | 16.5 | 39.1 |
| FLQc030 | Quartier 6.5 c | 30.2 | 53.0 | 15.2 | 39.1 |
| FLQc031 | Quartier 6.5 d | 27.7 | 53.0 | 12.7 | 39.2 |
| FLQc032 | Quartier 6.5 e | 26.9 | 53.0 | 11.9 | 39.2 |
| FLQc033 | Quartier 6.5 f | 28.3 | 53.0 | 18.3 | 39.2 |
| FLQc034 | Quartier 6.5 g | 23.1 | 53.0 | 13.1 | 39.2 |
| FLQc035 | Quartier 6.5 h | 24.5 | 53.0 | 9.5 | 39.2 |
| FLQc036 | Quartier 6.5 i | 17.4 | 53.0 | 7.4 | 39.2 |
| FLQc037 | Quartier 7.1 | 17.1 | 53.0 | | 39.2 |
| FLQc038 | Quartier 8.1 | 29.7 | 53.0 | 14.7 | 39.2 |
| FLQc039 | Quartier 8.2 a | 29.1 | 53.1 | 14.1 | 39.2 |
| FLQc040 | Quartier 8.2 b | 27.9 | 53.1 | 12.9 | 39.3 |
| FLQc041 | Quartier 8.3 | 26.5 | 53.1 | 11.5 | 39.3 |
| FLQc042 | Quartier 9.1 a | 27.5 | 53.1 | 12.5 | 39.3 |
| FLQc043 | Quartier 9.1 b | 29.1 | 53.1 | 14.1 | 39.3 |
| FLQc044 | Quartier 9.1 c | 27.9 | 53.1 | 12.9 | 39.3 |
| FLQc045 | Quartier 9.1 d | 25.7 | 53.1 | 15.7 | 39.3 |
| FLQc046 | Quartier 9.2 | 22.2 | 53.1 | 7.2 | 39.3 |
| FLQc047 | Quartier 10.1 a | 32.6 | 53.2 | 17.6 | 39.3 |
| FLQc048 | Quartier 10.1 b | 28.5 | 53.2 | 13.5 | 39.4 |
| FLQc049 | Quartier 10.2 | 25.4 | 53.2 | 10.4 | 39.4 |
| FLQc050 | Quartier 11.1 | 32.4 | 53.2 | 17.4 | 39.4 |
| | | | 53.2 | | 39.4 |

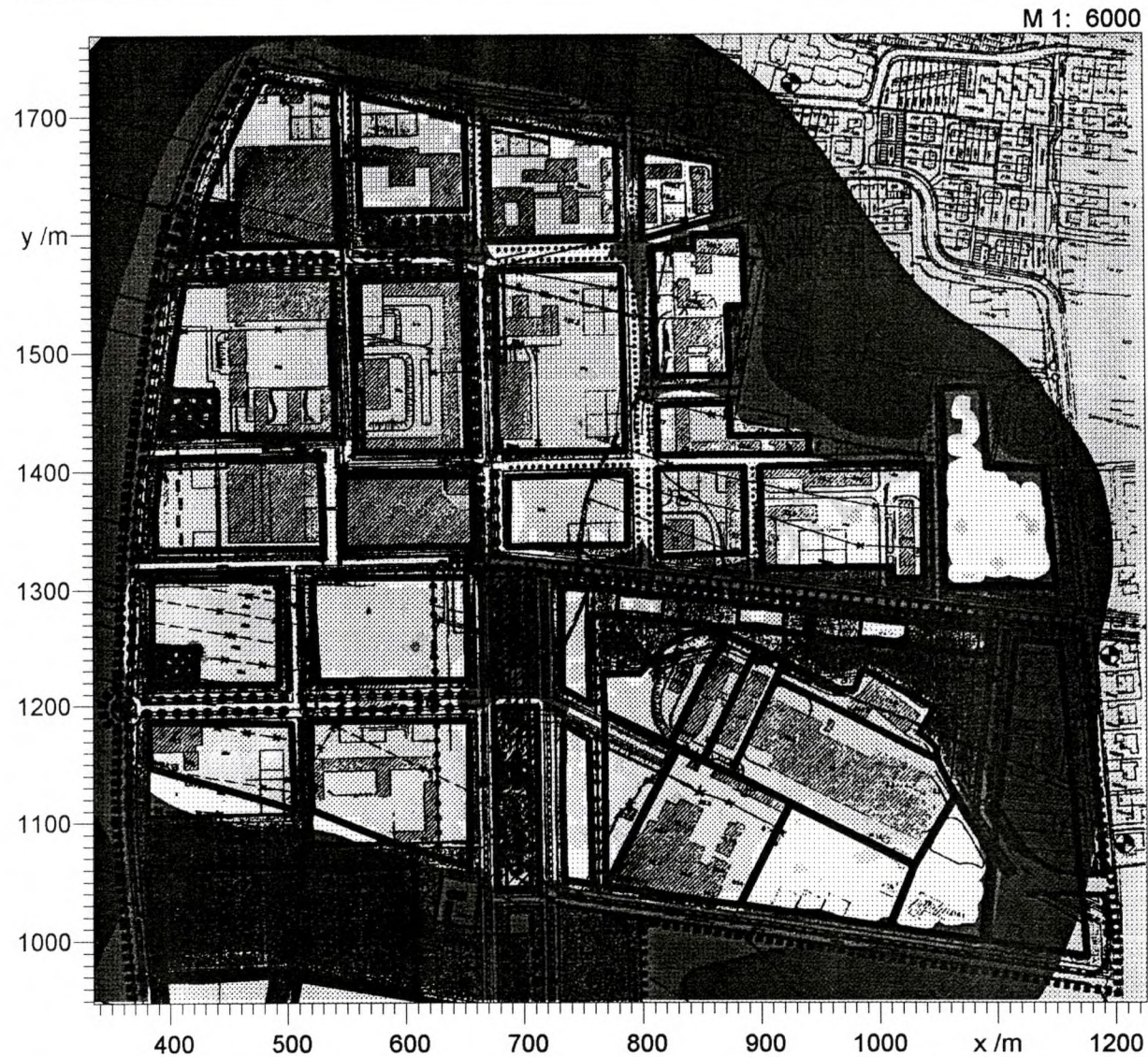
Immissionsort: IO Schwalbenstr. 98
 X = 928.24 Y = 1728.28 Z = 17.50
 Variante: BPI-Gebiet gesamt

| Element | Bezeichnung | Tag | | Nacht | |
|---------|-----------------|-----------------|---------------|-----------------|---------------|
| | | L r,i /dB(A) | L r /dB(A) | L r,i /dB(A) | L r /dB(A) |
| FLQc001 | HS-Landeplatz | 43.7 | 43.7 | | |
| FLQc002 | Quartier 1.1 | 37.5 | 44.7 | 22.5 | 22.5 |
| FLQc003 | Quartier 1.2 | 36.4 | 45.3 | 21.4 | 25.0 |
| FLQc004 | Quartier 2.1 | 36.6 | 45.8 | 26.6 | 28.9 |
| FLQc005 | Quartier 2.2 | 38.3 | 46.5 | 25.3 | 30.5 |
| FLQc006 | Quartier 2.3 | 36.8 | 47.0 | 23.8 | 31.3 |
| FLQc007 | Quartier 2.4 | 33.8 | 47.2 | 18.8 | 31.5 |
| FLQc008 | Quartier 2.5 | 33.3 | 47.3 | 18.3 | 31.7 |
| FLQc009 | Quartier 2.6 | 33.9 | 47.5 | 18.9 | 32.0 |
| FLQc010 | Quartier 2.7 | 26.1 | 47.6 | 16.1 | 32.1 |
| FLQc011 | Quartier 3.1 a | 37.4 | 48.0 | 22.4 | 32.5 |
| FLQc012 | Quartier 3.1 b | 38.6 | 48.4 | 23.6 | 33.0 |
| FLQc013 | Quartier 3.2 a | 33.6 | 48.6 | 18.6 | 33.2 |
| FLQc014 | Quartier 3.2 b | 33.4 | 48.7 | 18.4 | 33.3 |
| FLQc015 | Quartier 4.1 | 37.4 | 49.0 | 25.4 | 34.0 |
| FLQc016 | Quartier 4.2 | 32.8 | 49.1 | 17.8 | 34.1 |
| FLQc017 | Quartier 5.1 | 34.7 | 49.3 | 19.7 | 34.2 |
| FLQc018 | Quartier 5.2 | 32.1 | 49.4 | 17.1 | 34.3 |
| FLQc019 | Quartier 5.3 | 32.1 | 49.4 | 17.1 | 34.4 |
| FLQc020 | Quartier 5.4 | 31.1 | 49.5 | 16.1 | 34.5 |
| FLQc021 | Quartier 5.5 | 26.4 | 49.5 | 11.4 | 34.5 |
| FLQc022 | Quartier 5.6 | 26.7 | 49.5 | 11.7 | 34.5 |
| FLQc023 | Quartier 5.7 | 21.5 | 49.5 | 6.5 | 34.5 |
| FLQc024 | Quartier 6.1 | 31.4 | 49.6 | 16.4 | 34.6 |
| FLQc025 | Quartier 6.2 | 23.5 | 49.6 | 8.5 | 34.6 |
| FLQc026 | Quartier 6.3 | 27.7 | 49.7 | 12.7 | 34.6 |
| FLQc027 | Quartier 6.4 | 25.1 | 49.7 | 10.1 | 34.6 |
| FLQc028 | Quartier 6.5 a | 27.3 | 49.7 | 12.3 | 34.7 |
| FLQc029 | Quartier 6.5 b | 31.1 | 49.8 | 16.1 | 34.7 |
| FLQc030 | Quartier 6.5 c | 29.5 | 49.8 | 14.5 | 34.8 |
| FLQc031 | Quartier 6.5 d | 27.2 | 49.8 | 12.2 | 34.8 |
| FLQc032 | Quartier 6.5 e | 26.5 | 49.8 | 11.5 | 34.8 |
| FLQc033 | Quartier 6.5 f | 28.2 | 49.9 | 18.2 | 34.9 |
| FLQc034 | Quartier 6.5 g | 23.0 | 49.9 | 13.0 | 34.9 |
| FLQc035 | Quartier 6.5 h | 24.4 | 49.9 | 9.4 | 34.9 |
| FLQc036 | Quartier 6.5 i | 17.5 | 49.9 | 7.5 | 34.9 |
| FLQc037 | Quartier 7.1 | 17.4 | 49.9 | | 34.9 |
| FLQc038 | Quartier 8.1 | 29.0 | 49.9 | 14.0 | 35.0 |
| FLQc039 | Quartier 8.2 a | 28.5 | 50.0 | 13.5 | 35.0 |
| FLQc040 | Quartier 8.2 b | 27.4 | 50.0 | 12.4 | 35.0 |
| FLQc041 | Quartier 8.3 | 26.2 | 50.0 | 11.2 | 35.1 |
| FLQc042 | Quartier 9.1 a | 27.0 | 50.0 | 12.0 | 35.1 |
| FLQc043 | Quartier 9.1 b | 28.6 | 50.1 | 13.6 | 35.1 |
| FLQc044 | Quartier 9.1 c | 27.3 | 50.1 | 12.3 | 35.1 |
| FLQc045 | Quartier 9.1 d | 25.1 | 50.1 | 15.1 | 35.2 |
| FLQc046 | Quartier 9.2 | 21.9 | 50.1 | 6.9 | 35.2 |
| FLQc047 | Quartier 10.1 a | 32.2 | 50.2 | 17.2 | 35.3 |
| FLQc048 | Quartier 10.1 b | 28.1 | 50.2 | 13.1 | 35.3 |
| FLQc049 | Quartier 10.2 | 25.1 | 50.2 | 10.1 | 35.3 |
| FLQc050 | Quartier 11.1 | 32.1 | 50.3 | 17.1 | 35.4 |
| | | | 50.3 | | 35.4 |

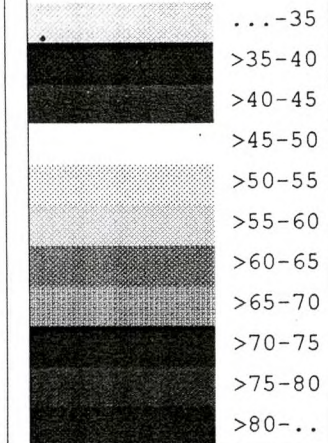
Darstellung der wirksamen Geräuschmissionen (Nachtzeitraum)

Anlage 5.5 Variante "mit Vorbelastung Hubschrauber-Landeplatz"

TÜV
SÜDDEUTSCHLAND

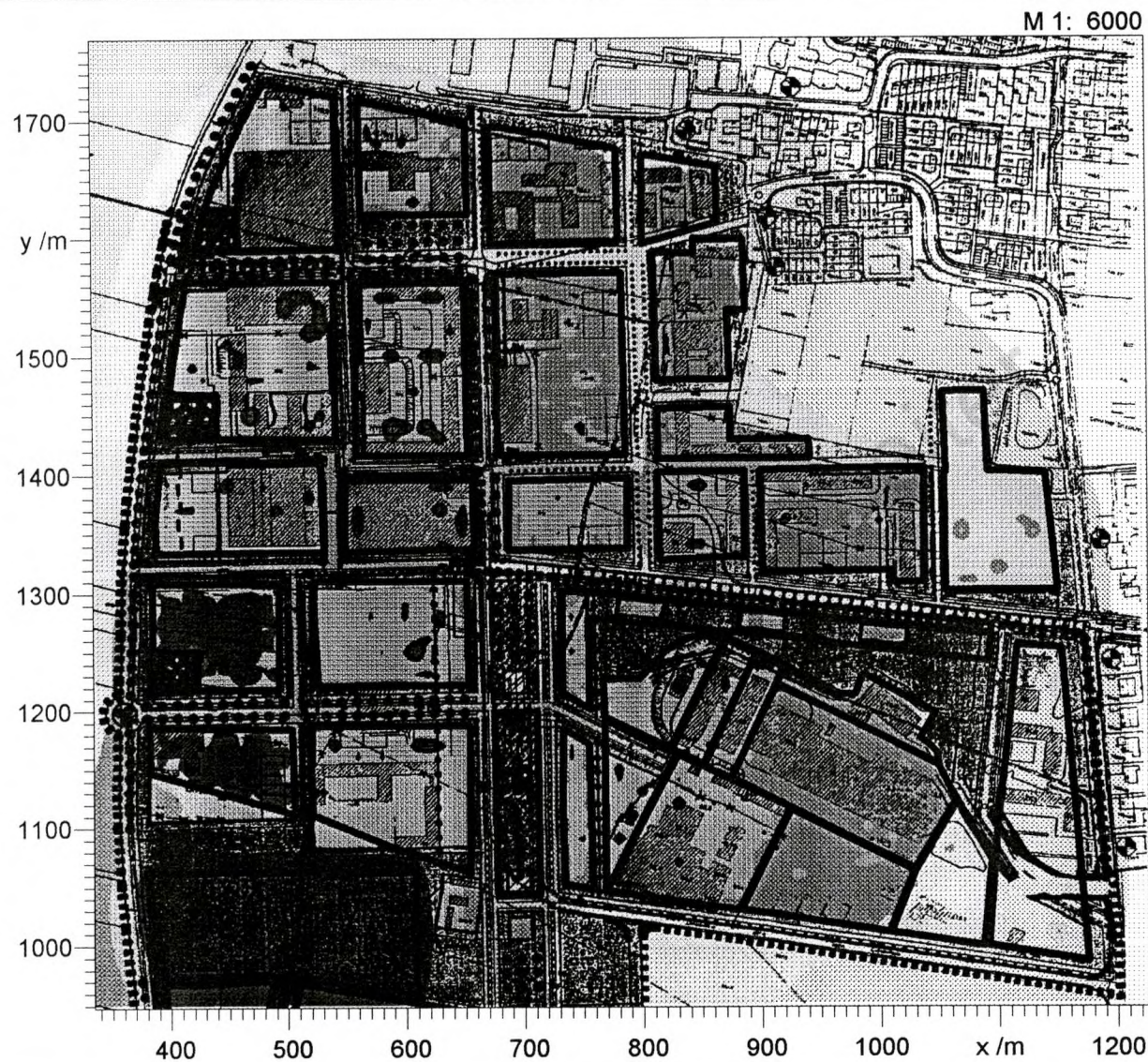


Nacht
Pegel
dB (A)



Darstellung der wirksamen Geräuschimmissionen (Tagzeitraum)

Anlage 5.4 Variante "mit Vorbelastung Hubschrauber-Landeplatz"

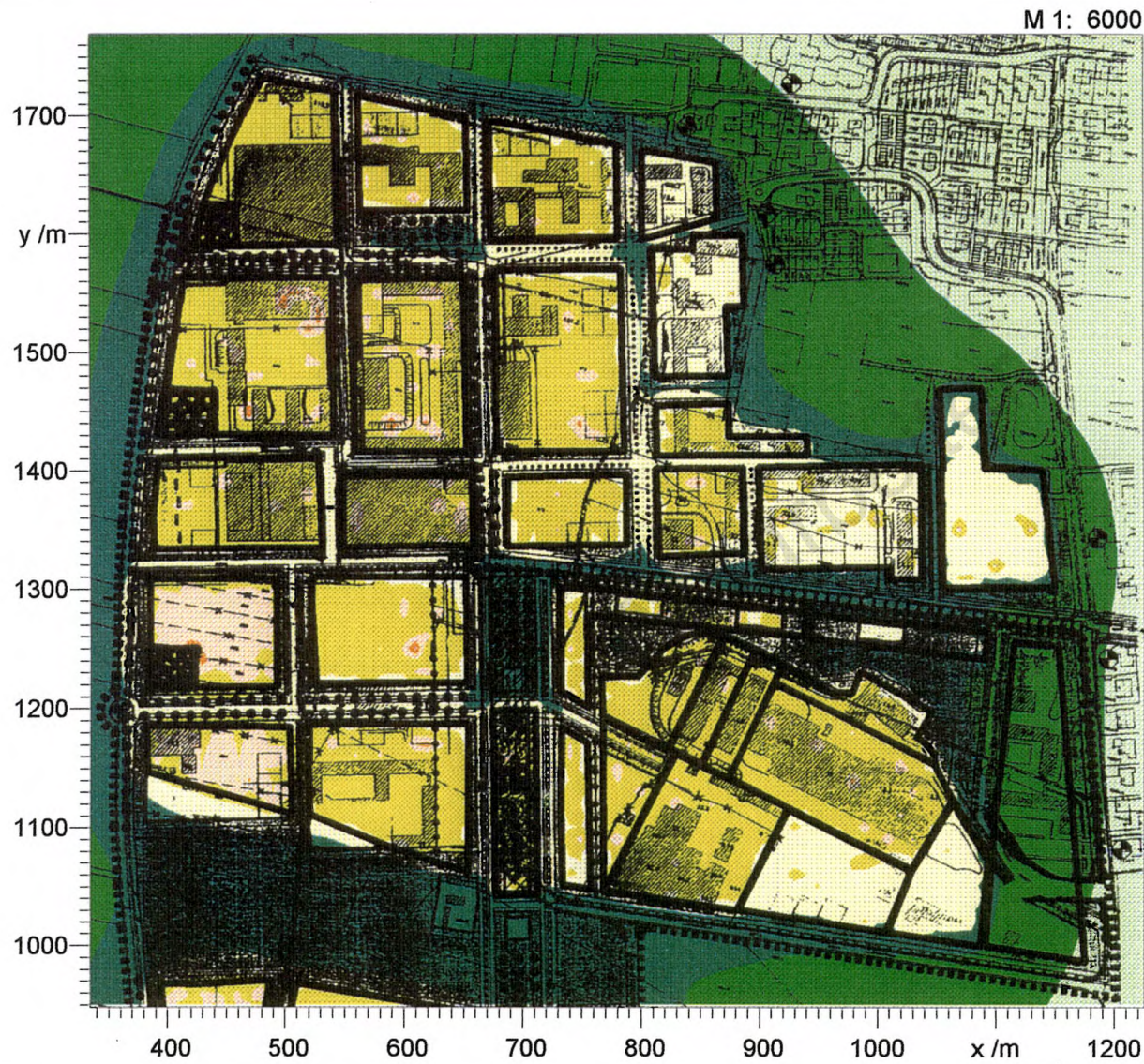


Tag
Pegel
dB (A)

| | |
|------------------------|--------|
| [Lightest shading] | ...-35 |
| [Light shading] | >35-40 |
| [Medium-light shading] | >40-45 |
| [Medium shading] | >45-50 |
| [Medium-dark shading] | >50-55 |
| [Dark shading] | >55-60 |
| [Very dark shading] | >60-65 |
| [Darkest shading] | >65-70 |
| [Black shading] | >70-75 |
| [Black shading] | >75-80 |
| [Black shading] | >80-.. |

Darstellung der wirksamen Geräuschimmissionen (Nachtzeitraum)

Anlage 4.5 Variante "ohne Vorbelastung"



| Nacht Pegel dB (A) | |
|--------------------------|--------|
| Lightest Green | ...-35 |
| Light Green | >35-40 |
| Dark Green | >40-45 |
| Yellow | >45-50 |
| Light Orange | >50-55 |
| Orange | >55-60 |
| Dark Orange | >60-65 |
| Red-Orange | >65-70 |
| Red | >70-75 |
| Dark Red | >75-80 |
| Dark Red | >80-.. |

